

INSTALLATION INSTRUCTIONS

MODEL NO.

73610

APPLICATION:

1984-01 Jeep Cherokee & Wagoneer (101" WB)

WARNING: Although this hitch is designed to safely tow its rated load, we recommend that you consult your vehicle owners manual for possible manufactures recommendations or limitations. Always follow the manufactures installation instructions and always install on the specified vehicle. Before installing hitch, check that the attachment points are in good condition.

Failure to follow these guide lines will void warranty. Any modifications to this hitch will void warranty.

WEIGHT CARRYING HITCH CAPACITY

3500 LBS. MAXIMUM TRAILER WEIGHT

350 LBS. MAXIMUM TONGUE WEIGHT

WEIGHT DISTRIBUTING HITCH CAPACITY

5000 LBS. MAXIMUM TRAILER WEIGHT

500 LBS. MAXIMUM TONGUE WEIGHT

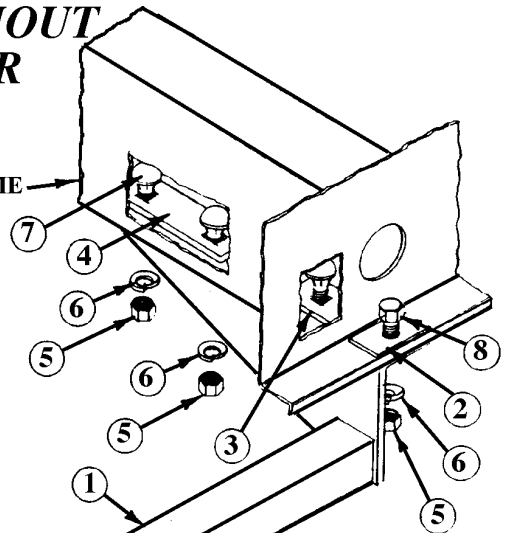
Trailer brakes are recommended for towing loads in excess of 1500 lbs.

PARTS INCLUDE:

- | | | | |
|-------------------------------------|-----|---|-----|
| 1. Receiver Assembly | (1) | 6. 1880-03 1/2 Lockwasher | (8) |
| 2. 1001-03 3/16 Spacer Plate | (2) | 7. 1786-03 1/2-13 x 1-3/4 Carriage Bolt GR5 | (6) |
| 3. 4342-08 Single Square Hole Plate | (2) | 8. 1836-03 1/2-13 x 1-1/2 Hex Bolt GR5 | (2) |
| 4. 2804-02 Two Square Hole Plate | (2) | 9. 2372-04 12mm x 40mm Hex Bolt CL 9.8 | (8) |
| 5. 1862-03 1/2-13 Hex Nut | (8) | 10. 4892-07 Pull Wire | (1) |

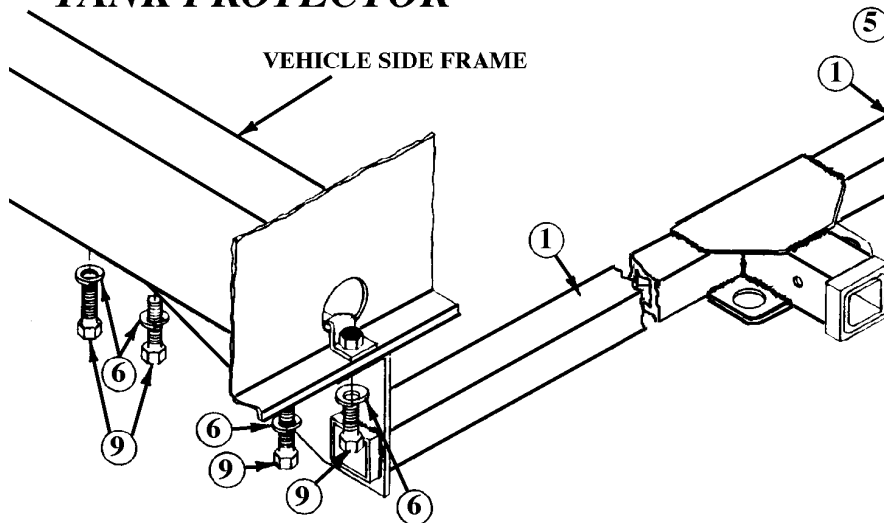
INSTALLATION WITHOUT TANK PROTECTOR

VEHICLE SIDE FRAME



INSTALLATION WITH TANK PROTECTOR

VEHICLE SIDE FRAME

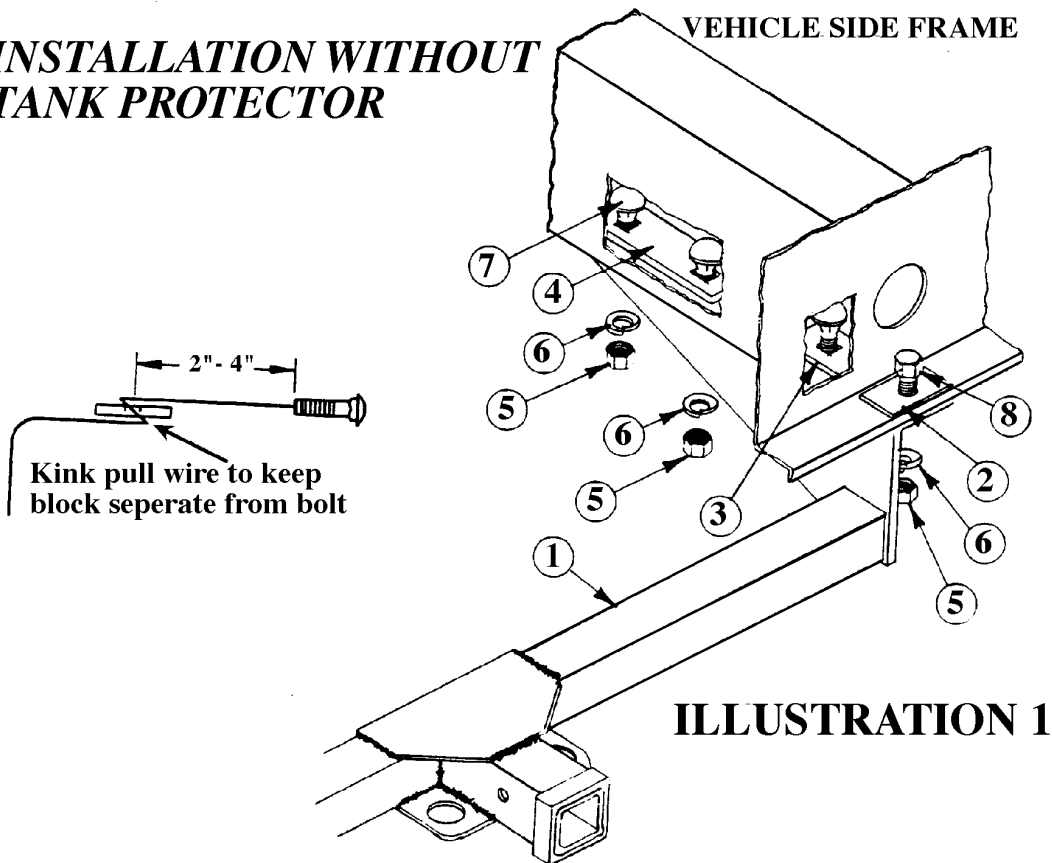


INSTALLATION INSTRUCTIONS FOR VEHICLES *WITHOUT* FACTORY INSTALLED GAS TANK PROTECTOR

If vehicle is equipped with factory installed tow hook attached to the end of vehicle frame, remove this hook before beginning hitch installation.

1. If vehicle is not equipped with a factory installed steel gas tank protector, two square hole plates #3 and #4 must be placed into each vehicle boxed side frame members, along with three 1/2" carriage bolts #7. See Illustration below.
2. Remove the tailpipe hanger bracket from the right side of vehicle. It will be reinstalled after hitch is in place.
3. Insert the square hole plates and carriage bolts into the boxed frame through the hole in the end of the frame, using a pull wire as shown below. NOTE: It may be easier to pull the parts into the frame if the bumper is removed. The bumper is secured with four bolts per side.
4. Carefully position the receiver assembly #1 up against the bottom of the vehicle frame so that the previously installed carriage bolts drop down through holes in the hitch frame brackets. Bolt the receiver securely in place as shown on Illustration 1 below. Bolt the tailpipe hanger bracket back in place at forward most hitch attachment bolt.
5. Place a 1/2 hex bolt down through hole in vehicle cross member and last hole in hitch frame bracket as illustrated below. Some older vehicles have a cross member with flange that must be bent flat for hitch to install correctly. Bolt cross member securely to hitch frame brackets.
5. Tighten all 1/2" bolts to 75 ft. lbs. torque.
6. Use only a 5/8" diameter hitch pin with locking device to secure a ball mount in this receiver.

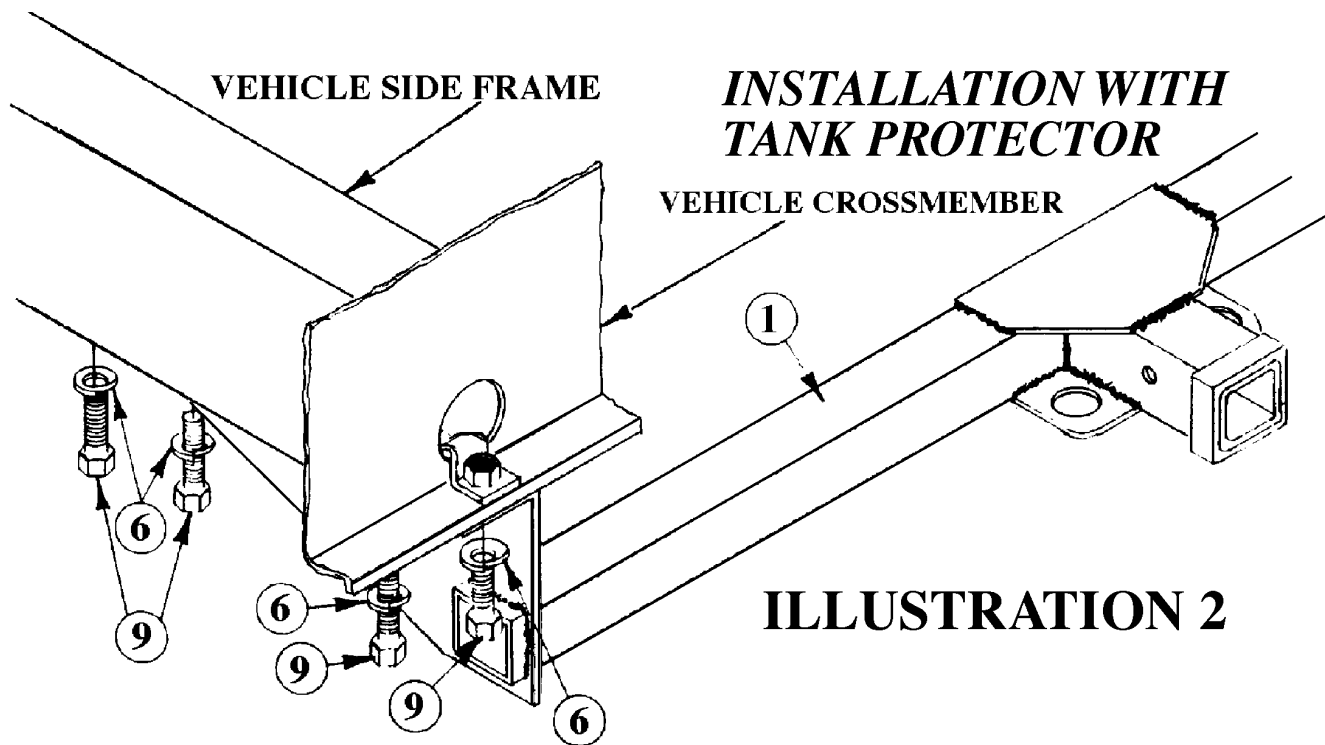
INSTALLATION WITHOUT TANK PROTECTOR



**INSTALLATION INSTRUCTIONS FOR VEHICLES
WITH
FACTORY INSTALLED STEEL GAS TANK PROTECTOR**

If vehicle is equipped with factory installed tow hook attached at the end of vehicle frame, remove this hook before beginning hitch installation.

1. On vehicles with factory installed steel gas tank protector, there will be a nut plate inside each vehicle side frame. Remove a 12mm bolt or double ended stud located about 8" from the end of each side frame. Also, remove the tailpipe hanger bracket from its bottom of frame location. It will be reinstalled after hitch is in place.
2. Position the receiver assembly #1 up against the bottom of the vehicle frame and cross member. The four holes in each hitch frame bracket will line up with existing holes and the nut plate inside the frame and cross member. Carefully thread the 12mm bolts up through the hitch frame brackets and into the nut plate as shown on Illustration 2 below. Attach the previously removed tailpipe hanger bracket to the hitch and frame at the forward most hitch attachment point.
3. Tighten all 12mm bolts to 75 ft. lbs. torque.
4. Use only a 5/8" diameter hitch pin with locking device to secure a ball mount in this receiver.



For information regarding this product, our warranty, contact your dealer or write to "CUSTOMER SERVICE MANAGER" P.O. Box 850, Lodi, CA 95241
NOTE: Some states require a clear view of license plate. Remove ball when not in use if it restricts view.

NOTE: This product complies with regulation V-5, C.S.A. Standard D-264 and safety requirements for connecting devices and towing systems of the State of New York.

73610