

TERAFLEX

INSTALLATION GUIDE

Installation Guide for the XJ & ZJ Front Sway Bar Quick Disconnects Kit (QDFXZ)

The new generation TeraFlex Sway Bar Quick Disconnects for XJs and ZJs include the components picture to the right. DO NOT use these quick disconnects with only one side connected. Doing so will void any warranty claims.



Grand Cherokee Owners: Please note that these instructions were photographed during an installation on a Cherokee. Although the function will be the same, the installation will vary slightly on the Grand Cherokee. Please use the instructions as guidance, but realize that actual drilling locations may appear different. When drilling, be sure to check clearance to avoid drilling into anything you shouldn't.

Part One

Prior to starting the installation, please remove stock sway bar links.

Step 1

After removing the sway bar links, identify the left and right quick disconnect. One way to tell is that the bolt head will point away from the vehicle in its final position.

Place the round spacer ring on the threaded bracket bolt.

Once the assembly has been inserted into place, make sure that the grease zerk points downward away from the vehicle. Add the flat washer and nut and secure.



Step 2

Attach the sway bar connecting stud to the lower mount bracket by inserting the stainless steel stud in the hole vacated by the sway bar arm and securing with lock washer and nut. Be sure that the threaded portion of the stud points away from the vehicle.



Tera Manufacturing, Inc.
5251 South Commerce Dr.
Murray, Utah 84107
Phone/801.288.2585
Fax/801.713.2313
www.teraflex.biz

Step 3

Use the pin for leverage when tightening the nut with a 3/4" wrench.



Step 4

Attach the sway bar arm by sliding the polyurethane bushing onto the lower stainless steel stud. The use of lubricant such as WD-40 will make this much easier.



Step 5

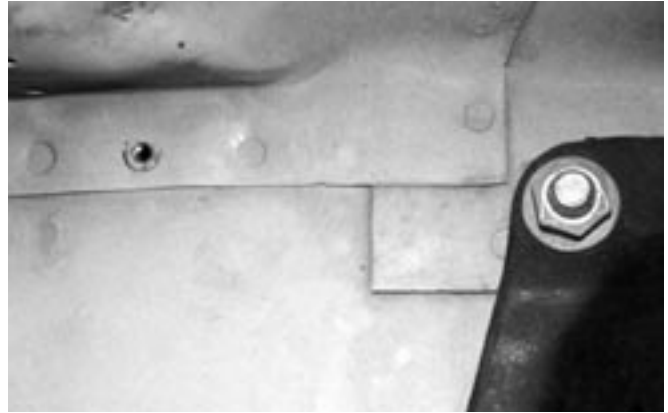
Secure the quick disconnect by placing the washer on the side opposite the bolt and insert pin into the stud. *Note: This photo illustrates how the front axle will shift to the driver's side when the suspension is fully extended by a hoist. You may wish to connect the components with the vehicle on the ground.*



Part Two

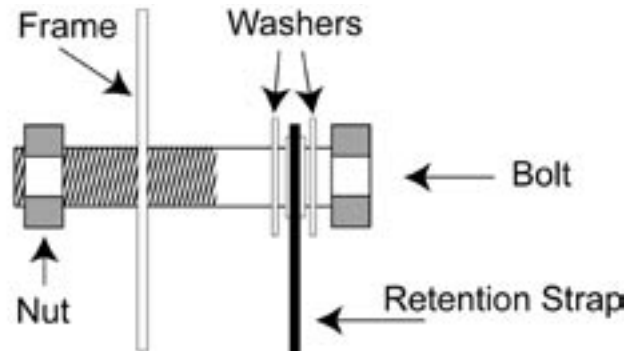
Step 1

The next step involves installation of the retention strap used to secure the sway bar when disconnected. Drill the hole where the retention strap will be attached. The photograph shows one possible location.



Step 2

Place one washer on each side of the grommet located on the upper end of the retention strap and insert the bolt. Please refer to the diagram.



Step 3

Tighten the bolt to secure the retention strap.



Step 4

Now, locate and mark the proper position for the retention strap hook. Be sure to allow enough freedom in the strap to remove the strap from the hook.



Step 5

Drill the hole marked in Step 4.



Step 6

Attach the retention strap hook to the vehicle using the included metal screws.



Notes on securing your disconnected sway bars

There are two methods of securing the disconnected sway bars. One method should be stronger but the other is quicker.

Stronger method



Quicker method



Instructions for Brake Line Relocators

1. Remove the Torx bolt holding the brake line to the frame.
2. Line the bracket up with the holes in the frame so that the bracket extends down.
3. With the bracket in place, use the Torx bolt to secure the bracket to the frame.
4. Pull the brake line assembly down until it lines up with the lower holes in the new bracket.
5. Using the 1/4" bolt and nut supplied, secure the brake line to the bracket.

Note:

We recommend greasing your quick disconnects at least every 3,000 miles. It is also a good idea to grease after going through water and when the quick disconnects become difficult to move. Lubricants like WD-40 on the stainless studs will make moving the quick disconnect arms much easier.