



3651 N Highway 89 • Chino Valley, AZ 86323
(928) 636-7080 • www.p-a-g.net

JEEP CHEROKEE, WAGONEER (XJ)

FRONT BUMPER

INSTALLATION INSTRUCTIONS

1984-2001 KIT# 83202

1984-2001 W/ WINCH KIT# 83203

⚠ WARNING

Before you install this kit, read and understand all instructions, warnings, cautions, and notes in this instruction sheet and in the vehicle owner's manual.

⚠ CAUTION

Proper installation of this kit requires knowledge of the factory recommended procedures for removal and installation of original equipment components. We recommend that the factory shop manual and any special tools needed to service your vehicle be on hand during the installation. Installation of this kit without proper knowledge of the factory recommended procedures may affect the performance of these components and the safety of the vehicle. We strongly recommend that a certified mechanic familiar with the installation of similar components install this kit.

⚠ WARNING

Many states and municipalities have laws restricting bumper heights and vehicle lifts. Consult state and local laws to determine if the changes you intend to make to the vehicle comply with the law.

⚠ WARNING

Always wear eye protection when operating power tools.

⚠ WARNING

Before you install this kit, block the vehicle tires to prevent the vehicle from rolling.

NOTE

Performance Automotive Group recommends using the Loctite® supplied in the kit on the threads of all kit nuts and bolts unless specified otherwise in these instructions.

Before Starting Installation

NOTE
Kit parts are prefaced by the word *kit* and appear in **bold print**.

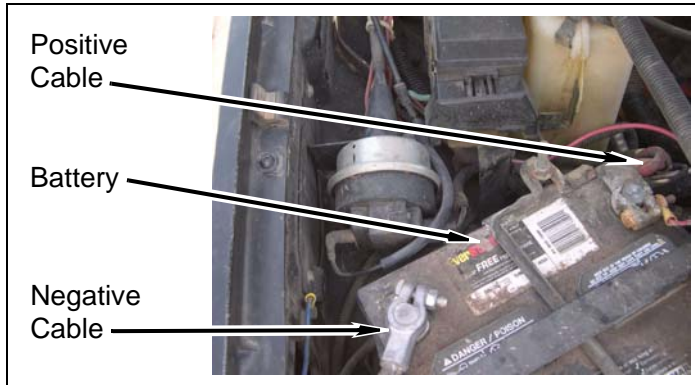
1. Carefully read all warnings and instructions completely before beginning.
2. Verify all parts have been received in this kit by checking the parts list at the end of this document.

NOTE
If parts are missing from kit, please be prepared to provide the following information:
1. **Name** of purchase location
2. **Bar Code** on side of box
3. **Date** above bar code
4. **Date** inside box cover
5. **Inspector #** from inside box cover

3. **Only install this kit on the vehicle for which it is specified.** If anytime during the installation you encounter something different from what is outlined in the instructions, call technical support at (928) 636-7080.
4. Special tools needed:
 - a. Die grinder or similar tool capable of cutting metal and plastic.
 - b. 7/32" drill bit
5. Park vehicle on a clean, dry, flat, level surface and block tires so vehicle cannot roll in either direction.

Engine Compartment

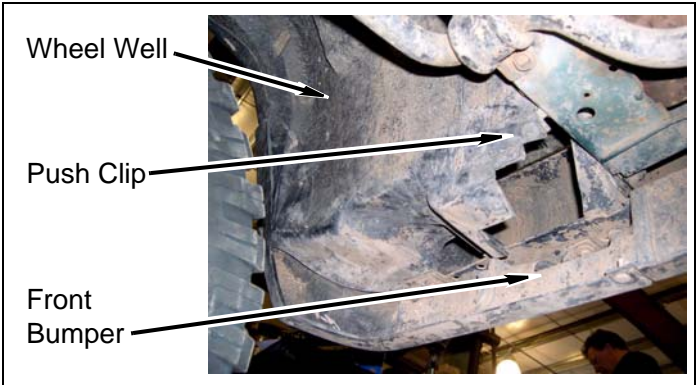
1. Disconnect both battery cables. Disconnect negative cable first, then positive cable.



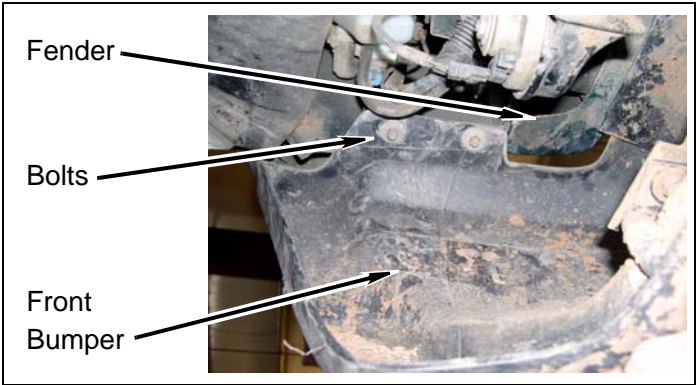
Prepare to Install Kit

Front of Vehicle

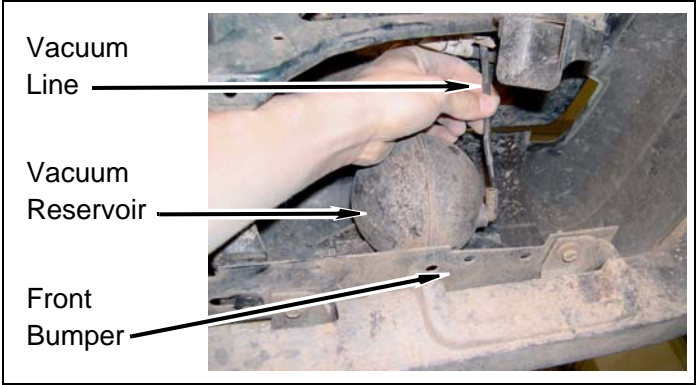
1. Bumper
 - a. **1997-2001 Models:** Remove push clips and pull back wheel well liner from front bumper.



- b. **1997-2001 Models:** Remove four bolts from front bumper and two fenders.

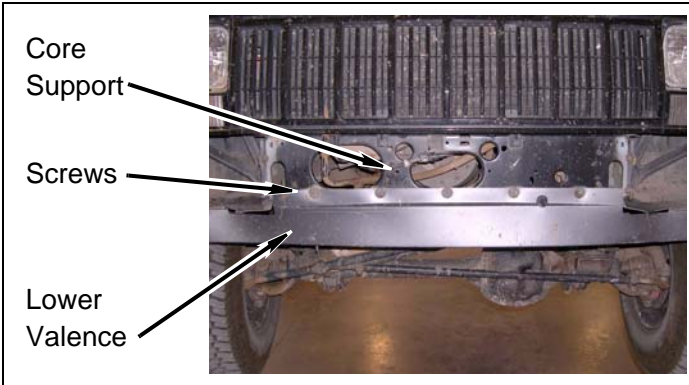


- c. Disconnect vacuum line from vacuum reservoir.

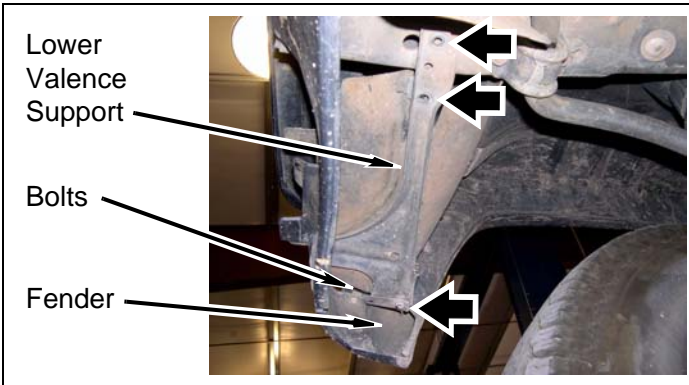


3. **1984-1996 Models:** Lower valence & fender flares

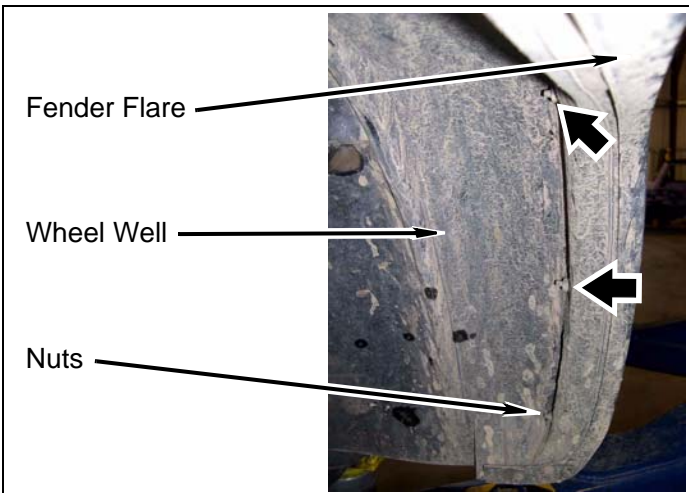
- a. Remove five screws from lower valence and core support.



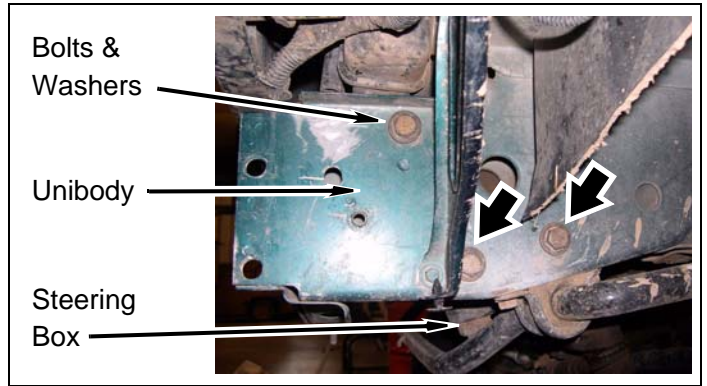
- b. Remove eight bolts and two lower valence supports from two fenders and core support.



- c. Remove six nuts from two front wheel wells and pull two fender flares away from front of fenders.



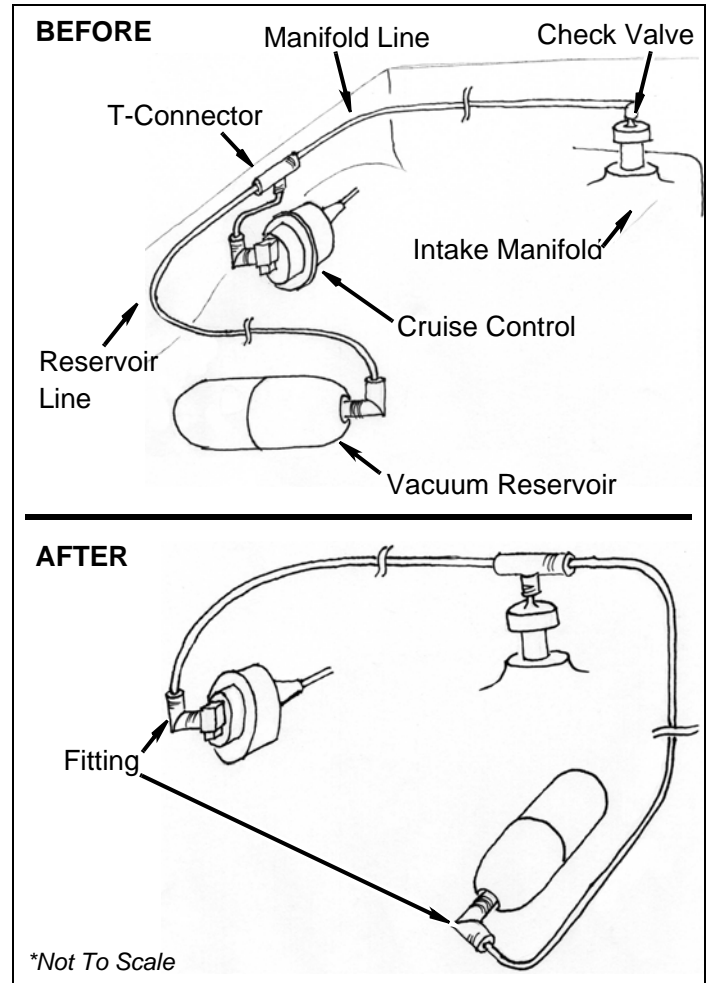
4. Remove three steering box bolts and washers from driver side unibody and steering box.



Install Kit

Engine Compartment

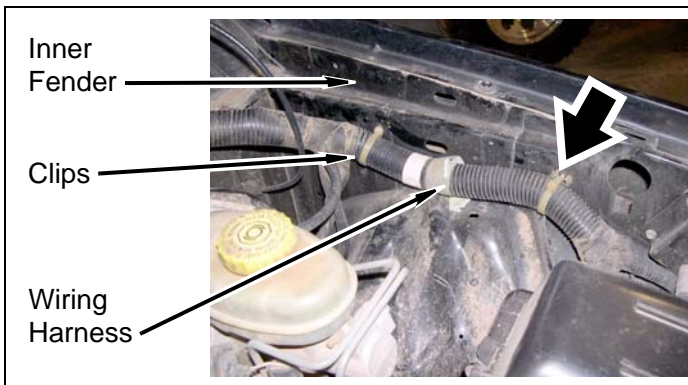
1. **Cruise Control Models:** Vacuum lines



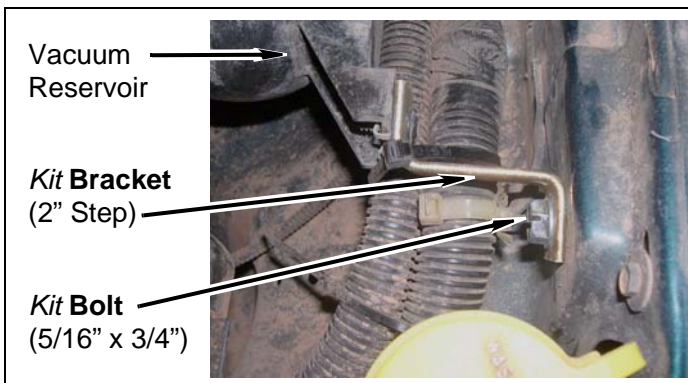
WARNING

Vacuum fittings and lines may have become brittle over time. Use care when handling fittings and vacuum lines. If necessary, use lengths of *kit line* (vacuum) in place of cracked or damaged vacuum line.

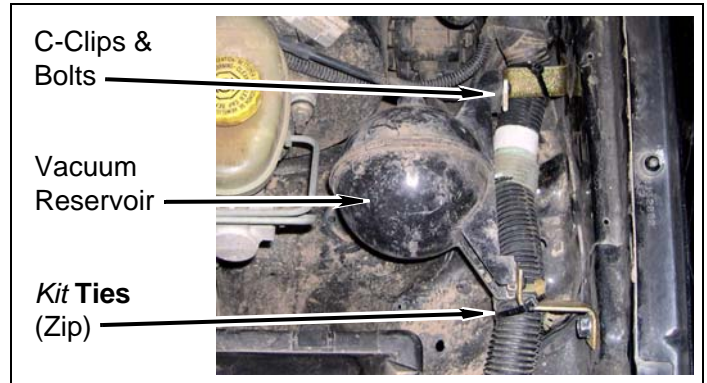
- Remove line from cruise control fitting and t-connector.
- Remove T-connector from reservoir line and manifold line.
- Trim manifold line, if necessary, and install onto cruise control fitting.
- Remove wiring harness and clips from driver side inner fender.



- Install two *kit bracket* (2" step) onto driver side inner fender with two *kit bolts* (5/16" x 3/4" self-tapping). DO NOT TIGHTEN.



- Install vacuum reservoir onto two *kit brackets* (2" step) with two factory c-clips and bolts. DO NOT TIGHTEN.



- Install wiring harness onto two *kit brackets* (2" step) with two *kit ties* (zip).
- TIGHTEN two *kit bolts* (5/16" x 3/4") and two factory bolts.
- Remove manifold line and fitting from check valve and intake manifold.
- Install T-connector onto check valve.
- Install manifold line into T-connector.
- Install vacuum reservoir line into T-connector and route vacuum reservoir line to vacuum reservoir.
- Trim vacuum reservoir line, if necessary. Install vacuum reservoir line onto vacuum reservoir with rubber fitting.

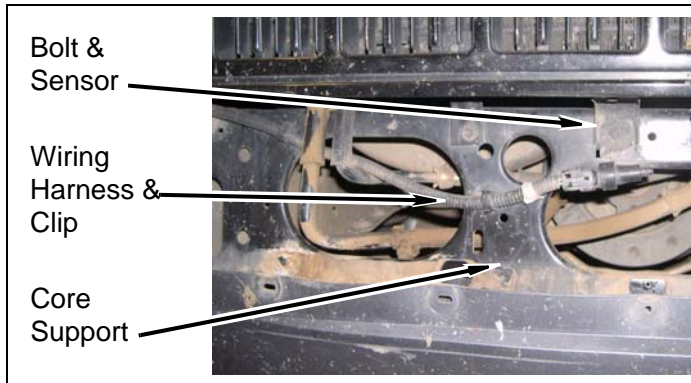
2. Non-Cruise Control Models: Vacuum lines

- Repeat above steps, ignoring cruise control procedures.

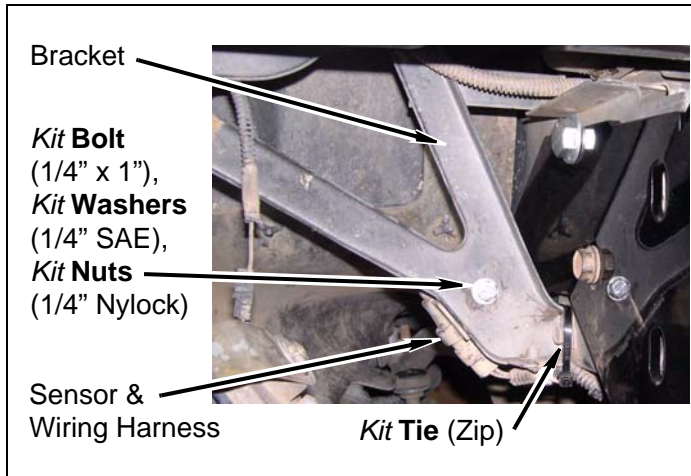
Front of Vehicle

1. Air temp sensor

- a. Remove bolt and sensor from core support. Install bolt back into core support.



- b. Disconnect wiring harness from sensor.
- c. Remove sensor wiring harness and clip from core support.
- d. Route wiring harness connector next to passenger side horn.
- e. Install sensor onto passenger side bracket with *kit bolt* (1/4" x 1"), two *kit washers* (1/4" SAE), and *kit nut* (1/4" Nylock).



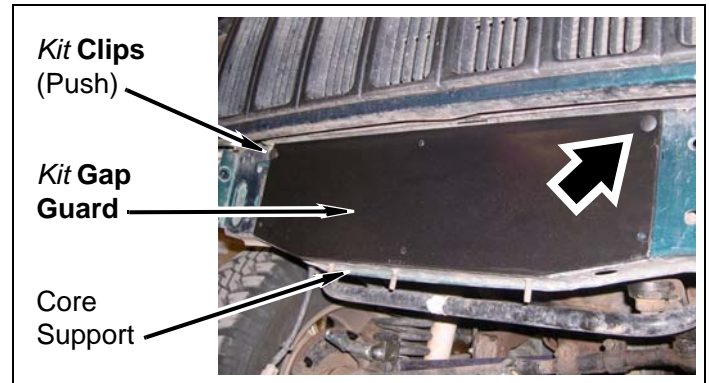
NOTE

Drill 1/4" hole into bracket, if necessary.

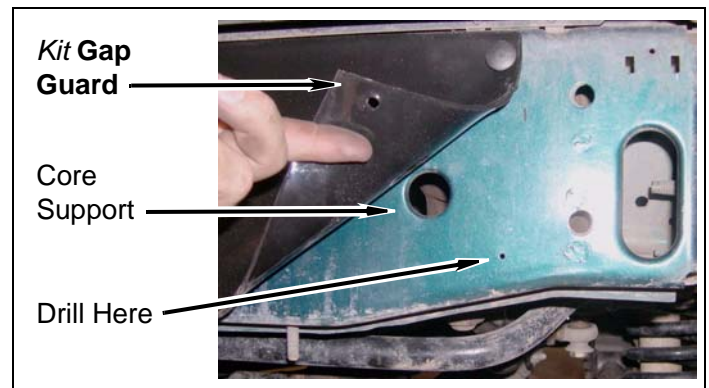
- f. Connect wiring harness onto sensor.
- g. Install wiring harness onto bracket with *kit tie* (zip).

2. Gap guard

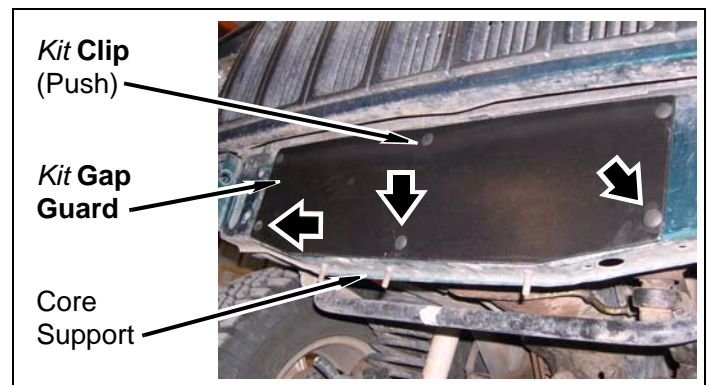
- a. Install *kit gap guard*, dull side out, onto core support with two *kit clips* (push) through top driver and passenger holes of *kit gap guard* and corresponding holes in core support.



- b. Drill four 7/32" holes into core support corresponding to *kit gap guard* holes.



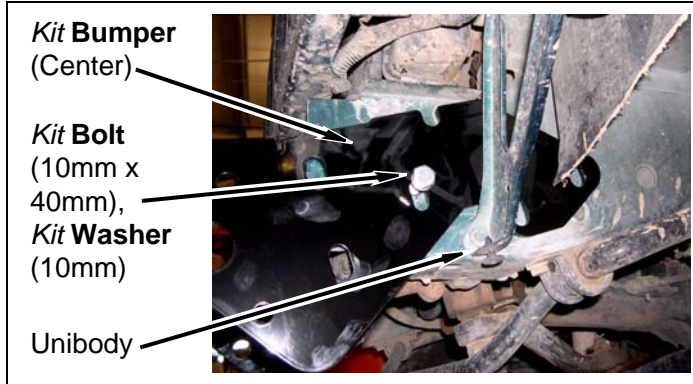
- c. Install 4 *kit clips* (push) into previously drilled holes.



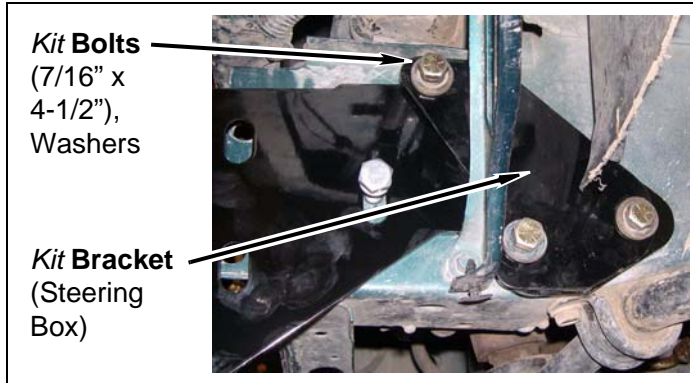
Bumper

1. Center section

- a. Install **kit bumper** (center) onto unibody with two **kit bolts** (10mm x 40mm), and two **kit washers** (10mm). DO NOT TIGHTEN.

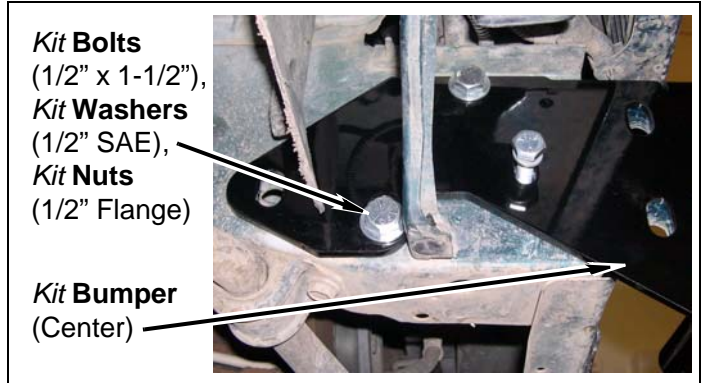


- b. Apply a small amount of **kit Loctite®** (6ml bottle) onto threads of three **kit bolts** (7/16" x 4-1/2") and install **kit bracket** (steering box), **kit bumper** (center), steering box, and steering box spacer onto unibody with three **kit bolts** (7/16" x 4-1/2") and three washers. DO NOT TIGHTEN.



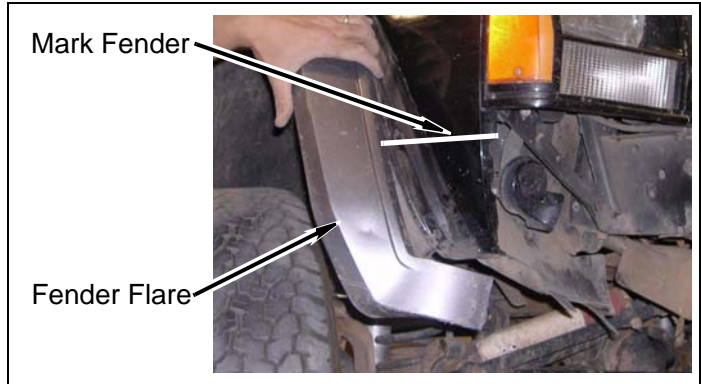
NOTE
A spacer exists between unibody and steering box. Ensure **kit bolts** (1/2" x 4-1/2") are installed through steering box spacer.

- c. Install two **kit bolts** (1/2" x 1-1/2"), two **kit washers** (1/2" SAE), and two **kit nuts** (1/2" flange) onto **kit bumper** (center) and passenger side unibody. DO NOT TIGHTEN.



2. 1984-1996 Models: Driver fenders

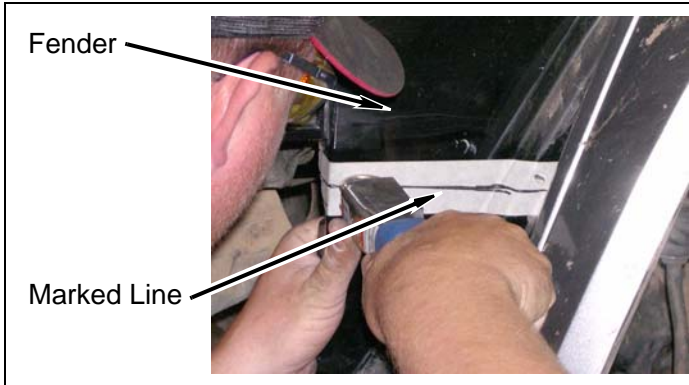
- a. Position **kit corner** (driver) onto **kit bumper** (center) and using **kit corner** (driver) as a guide, mark fender approximately 1" below side marker.



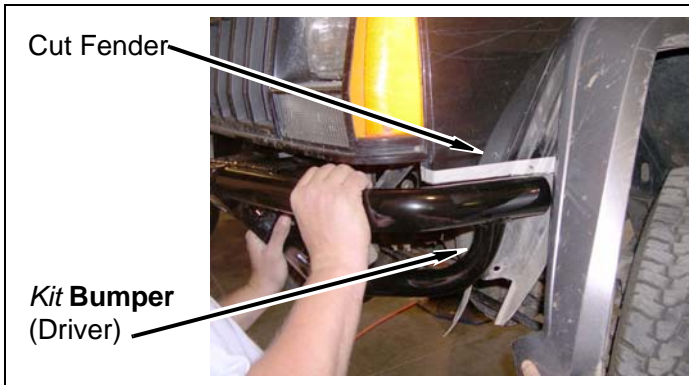
NOTE
For proper fender flare retention, attempt to cut fender flare and bracket **BELOW** fender flare bracket stud.

NOTE
Further trimming of the fender and fender flare may be required for desired fitment.

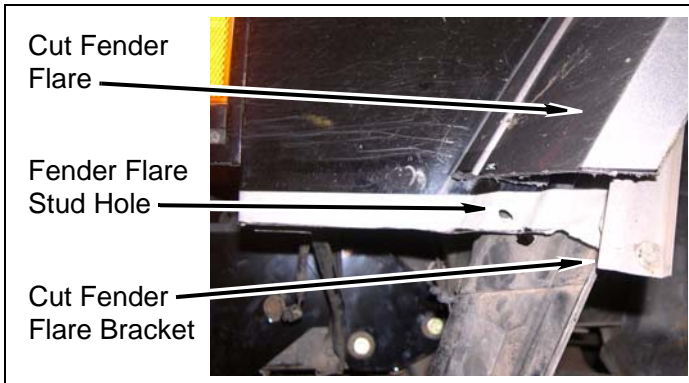
b. Cut fender along marked line.



c. Test fit *kit corner* (driver) onto *kit bumper* (center).



d. Mark and cut fender flare and fender flare bracket along marked line for desired fit. Remove lower valence along with cut portions of fender flares.

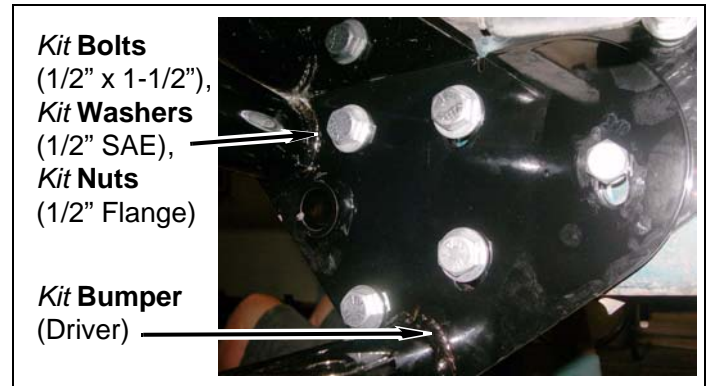


e. Install fender flare and fender flare bracket onto fender with nut, if possible.

f. Repeat above steps for *kit corner* (passenger).

3. Driver section

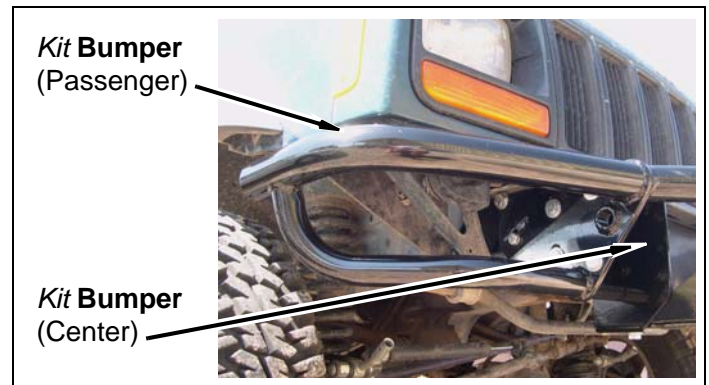
a. Remove *kit bolt* (10mm x 40mm) and *kit washer* (10mm) from *kit bumper* (center) and unibody.



b. Install *kit corner* (driver) onto *kit bumper* (center) with four *kit bolts* (1/2" x 1-1/2"), four *kit washers* (1/2" SAE), four *kit nuts* (1/2" flange), *kit bolt* (10mm x 40mm), and *kit washer* (10mm). DO NOT TIGHTEN.

c. Repeat above steps for passenger side section.

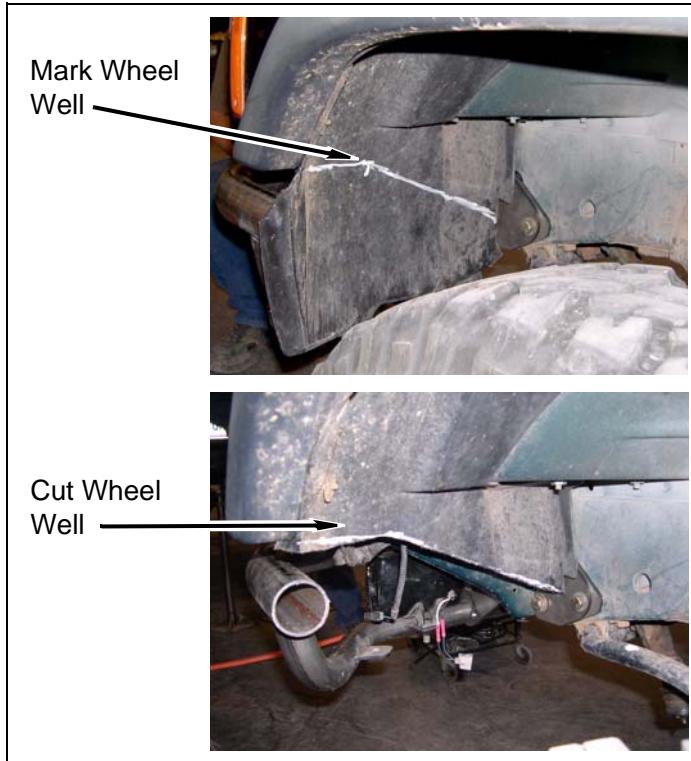
d. Align and level *kit bumper* (center) and TIGHTEN two *kit bolts* (10mm x 40mm), three *kit bolts* (7/16" x 4-1/2"), and two passenger side *kit bolts* (1/2" x 1-1/2").



e. TIGHTEN eight *kit bolts* (1/2" x 1-1/2"), *kit corner* (driver), and *kit corner* (passenger).

4. Driver wheel well liner

- a. Mark driver wheel well liner as desired and trim.

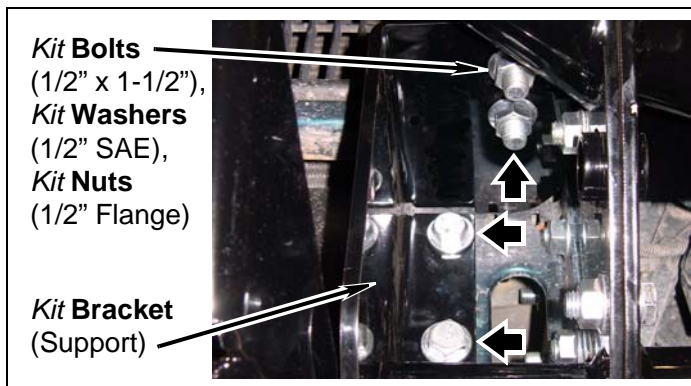


- b. Repeat above step for passenger side wheel well liner.

5. Driver Support Bracket

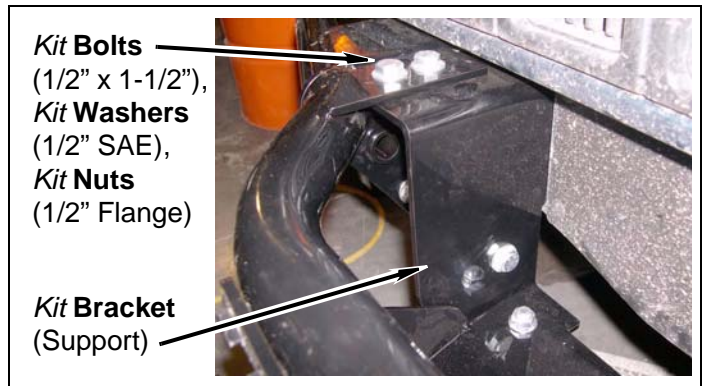
NOTE
Before installing top bolts, install *kit grill guard hoop*, if purchased.

- a. Install *kit bracket* (support, driver) onto driver side unibody and *kit bumper* with four *kit bolts* (1/2" x 1-1/2"), four *kit washers* (1/2" SAE), and four *kit nuts* (1/2" flange). DO NOT TIGHTEN.



- b. **Kit# 83202:** Repeat above step for *kit bracket* (support, passenger). TIGHTEN all hardware.

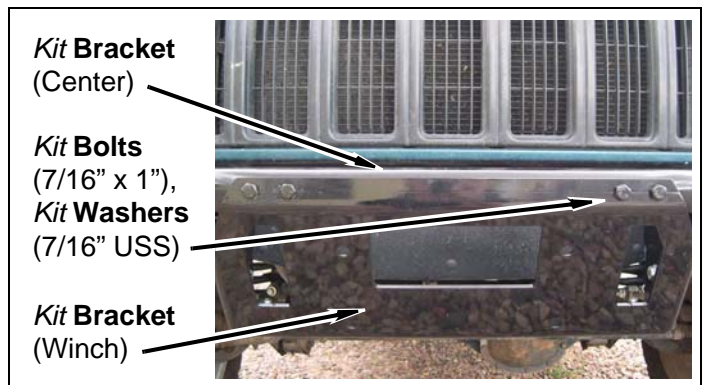
- c. **Kit# 83203:** Repeat above step for *kit bracket* (support, passenger). DO NOT TIGHTEN.



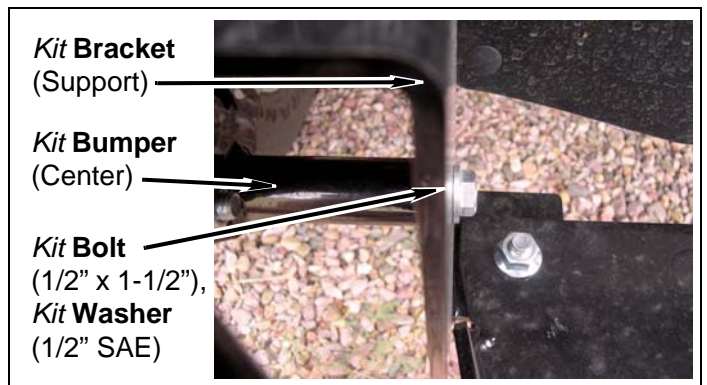
6. **Kit# 83203:** Driver Support Bracket & Winch Bracket

NOTE
Before installing top bolts, install *kit grill guard hoop*, if purchased.

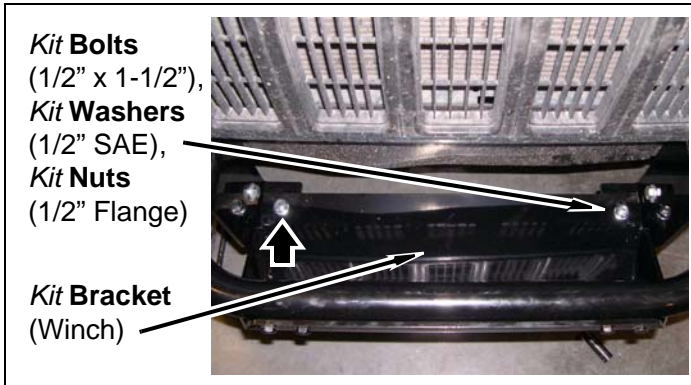
- a. Install *kit bracket* (winch) onto *kit bumper* (center) with four *kit bolts* (7/16" x 1") and four *kit washers* (7/16" USS). DO NOT TIGHTEN.



- b. Install two *kit brackets* (support) onto *kit bumper* (center) with two *kit bolts* (1/2" x 1-1/2") and two *kit washers* (1/2" SAE). DO NOT TIGHTEN.

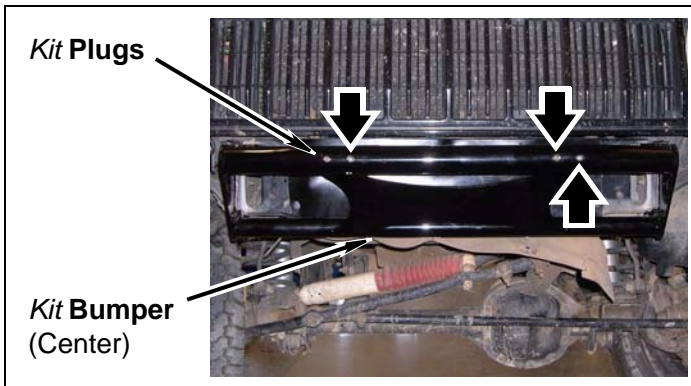


- c. Install **kit bracket** (winch) onto two **kit brackets** (support) with two **kit bolts** (1/2" x 1-1/2"), two **kit washers** (1/2" SAE), and two **kit nuts** (1/2" flange).



- d. TIGHTEN all hardware.

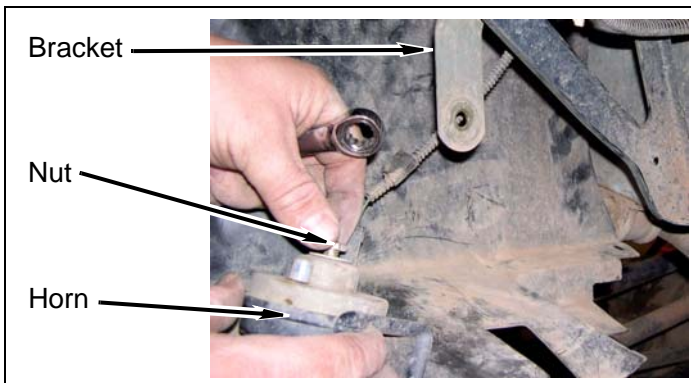
7. **Kit# 83202:** Install four **kit plugs** into **kit bumper** (center).



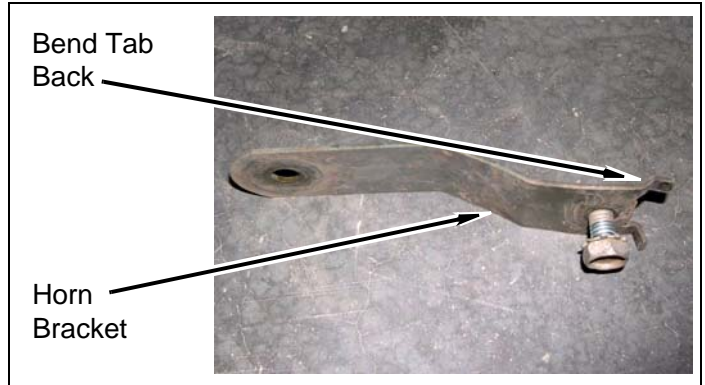
NOTE
Winch supplied mounting bolts may not be sufficient in length.

8. Driver side horn

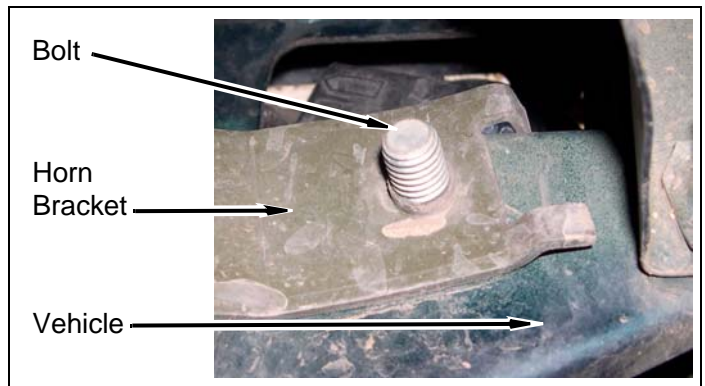
- a. Remove nut and bracket from horn.



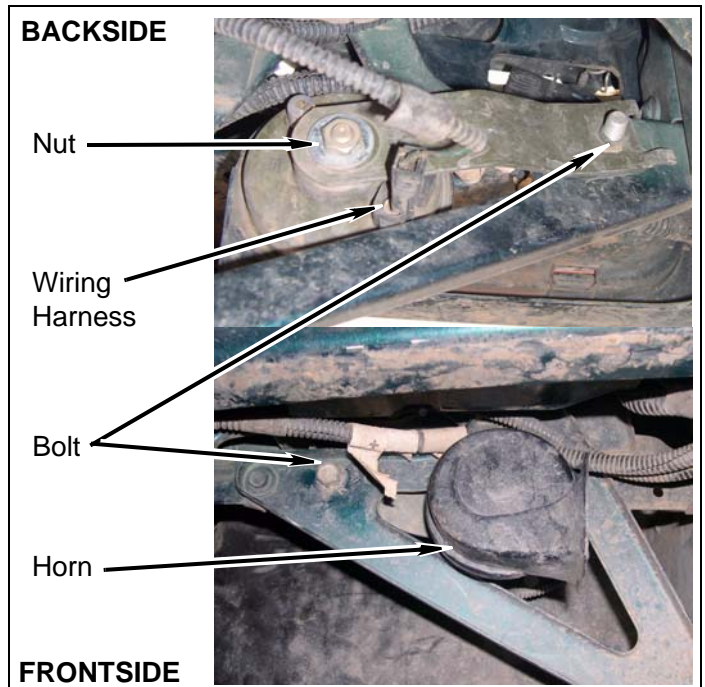
- b. Bend bracket tab as shown.



- c. Install bracket onto vehicle with bolt. **DO NOT TIGHTEN.** Ensure bracket is positioned as shown.



- d. Install horn onto bracket with nut. **TIGHTEN** bolt and bracket onto vehicle.



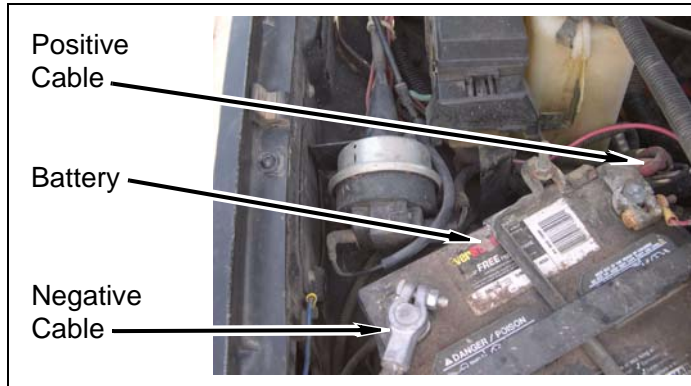
- e. Install wiring harness onto horn.

- f. Repeat above steps for passenger side horn.

After Completing Installation

Engine Compartment

1. Connect both battery cables. Connect positive cable first, then negative cable.



Miscellaneous

1. Check all fasteners to ensure they are tight.
2. Ensure all wires, hoses, cables, etc. are properly connected and there is ample slack.
3. Check vacuum system for leaks.

Dynamic Vehicle Check

1. Check steering and suspension in all positions to ensure that there is no bind and adequate clearance between all moving, fixed, and heated members. Check tire-to-bumper clearance and ensure no contact in any position. Check battery connections and electrical component operations. Test-drive vehicle. Check cruise control, if equipped, and all vacuum controlled vehicle systems. If vacuum leaks are found, correct immediately.

⚠ CAUTION

Performance Automotive Group does not recommend any particular wheel and tire combinations for use with its bumpers and cannot assume responsibility for the customer's choice of wheels and tires.

Accessories

Kit# 87011 - Multi Light Mount

Kit# 87016 - Grill Guard Hoop



NOTE

Hi-Lift jacks can be mounted to *kit bumper*.

NOTE

All warranty information, instruction sheets, and other documents regarding the installation of this product must be retained by the vehicle owner. Information contained in the instructions and on the warranty card will be required for any warranty claims. The vehicle owner needs to understand the modifications made to the vehicle and how they affect vehicle handling and performance. Failure to provide the customer with this information can result in damage to the vehicle and severe personal injury.

Kit Parts List

Qty. Description

Kit 83202 & 83203

1 **Bracket** (support, driver)
 1 **Bracket** (support, passenger)
 1 **Bracket** (steering box)
 1 **Bumper** (center)
 2 **Cap** (end)
 1 **Corner** (driver)
 1 **Corner** (passenger)
 1 **Gap guard**
 1 **Line** (vacuum)

Kit 83203

1 **Bracket** (winch)

1 ZH26 (Hardware Bag Kit)

2 **Bracket** (2" step)
 2 **Bolt** (10mm x 40mm)
 1 **Bolt** (1/4" x 1")
 2 **Bolt** (5/16" x 3/4" self-tapping)
 3 **Bolt** (7/16" x 4-1/2")
 18 **Bolt** (1/2" x 1-1/2")
 6 **Clip** (push)
 1 **Loctite®** (6ml bottle)
 1 **Nut** (1/4" Nylock)
 18 **Nut** (1/2" flange)
 4 **Plug**
 4 **Tie** (zip)
 2 **Washer** (10mm)
 2 **Washer** (1/4" SAE)
 18 **Washer** (1/2" SAE)

Qty. Description

1 **ZH27 (Hardware Bag Kit)**
 2 **Bracket** (2" step)
 2 **Bolt** (10mm x 40mm)
 1 **Bolt** (1/4" x 1")
 2 **Bolt** (5/16" x 3/4" self-tapping)
 4 **Bolt** (7/16" x 1")
 3 **Bolt** (7/16" x 4-1/2")
 22 **Bolt** (1/2" x 1-1/2")
 6 **Clip** (push)
 1 **Loctite®** (6ml bottle)
 1 **Nut** (1/4" Nylock)
 20 **Nut** (1/2" flange)
 4 **Tie** (zip)
 2 **Washer** (10mm)
 2 **Washer** (1/4" SAE)
 4 **Washer** (7/16" USS)
 22 **Washer** (1/2" SAE)

NOTE

Depending on the vehicle configuration some parts may not be used.